



BE PART  
OF THE  
NEW REVOLUTION  
IN SHUTTERS



# SAY HELLO TO THE GAME CHANGER

Weatherwell Aluminum shutters take design to a new level by combining strength with beauty and versatility, giving you an unprecedented product to offer your customers.

For years, Aluminum Shutters have been the favorite of commercial and high-end architects around the world. Now The Window Outfitters is excited to bring this product to you as part of the world's most comprehensive shutter program.

## Aluminum Shutters: A Wealth of Possibilities

- Expand living for all seasons by enclosing the outdoor space
- Create privacy from neighbors
- Preserve facade design integrity with a uniform exterior
- Create elegant security with lockable panels and secure blades
- Strength and durability that can weather the elements
- Flexibility in installation: hinged, fixed, sliding and multi-fold

## Innovate Your Space.

The Window Outfitters is a personalized company with Global reach.

Old-fashioned service; New age technology. The Window Outfitters is committed to providing the best in sales tools, sampling, and a state of the art ordering and business system that stems from tablet to factory.

Selling in 6 continents, our multinational team has extensive experience in shutter manufacturing, installation and product development. We also believe in supporting you holistically from the specs of commercial and residential projects to assistance with business marketing.



THE WINDOW OUTFITTERS



# Weatherwell

*Designed for Beauty. Built to Weather Life.*

- Custom made by a Western style Chinese manufacturer
- Soft lines mimic a traditional wood plantation shutter
- Available in 3 blade sizes and fixed blade
- Great for use in high traffic and wet areas



# Weatherwell

ELITE

*Pure Innovation. Engineered to Weather the Elements.*

- Custom made in the USA
- Clean, modern design with no visible screws, fixings or tilt rod
- Position louvers in place with exclusive 'Blade Stay' feature
- Concealed mechanisms and powder-coating give maximum outdoor durability
- Extreme wind ratings



# INSTALLATION: MULTI-FOLD

The most flexible of all the installation types. Used to completely fold the shutters away from the opening when a non obstructed view is required.



# INSTALLATION: SLIDING

Sliding shutters are a great option when you need to place over sliding doors, enclose balconies or any other outdoor area. Sliders win for easy operation but cannot be fully removed from view.







## INSTALLATION: FIXED

Used when shutters are not required to be removed from an opening and only the blades need to be operated.



## INSTALLATION: HINGED

For added security, use aluminum shutters inside as a beautiful alternative to wood. Also a great option inside when kids and pets are a factor and in high traffic commercial areas.



# WEATHERWELL ALUMINUM OPTIONS

## STANDARD COLOR OPTIONS



White



Pearl



Silver



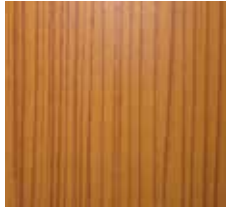
Black

## AVAILABLE SECURITY FEATURES



Flush Bolt

## WOOD GRAIN POWDERCOAT



Golden Oak



Light Cedar



Limewash



Walnut

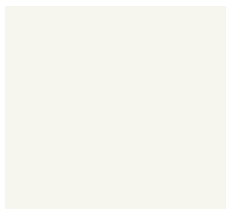


Security Bolt

AVAILABLE LOUVER SIZES: 2.5", 3.5", and 4.5"

# WEATHERWELL ELITE ALUMINUM OPTIONS

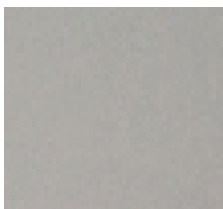
## STANDARD COLOR OPTIONS



White



Pearl



Clear-Coat Anodized



Black

## AVAILABLE SECURITY FEATURE



Double Shute Bolt Key

## WOOD GRAIN POWDERCOAT



Knotty Pine



Walnut Matte

## BLADE STAY



Comes Standard



Double Shute Bolt

AVAILABLE LOUVER SIZE: 3.5"

CONTACT US TODAY FOR A QUOTE: 469-619-0892

COMPLETE YOUR OFFERING WITH OUR EXCLUSIVE WOOD RANGES:

